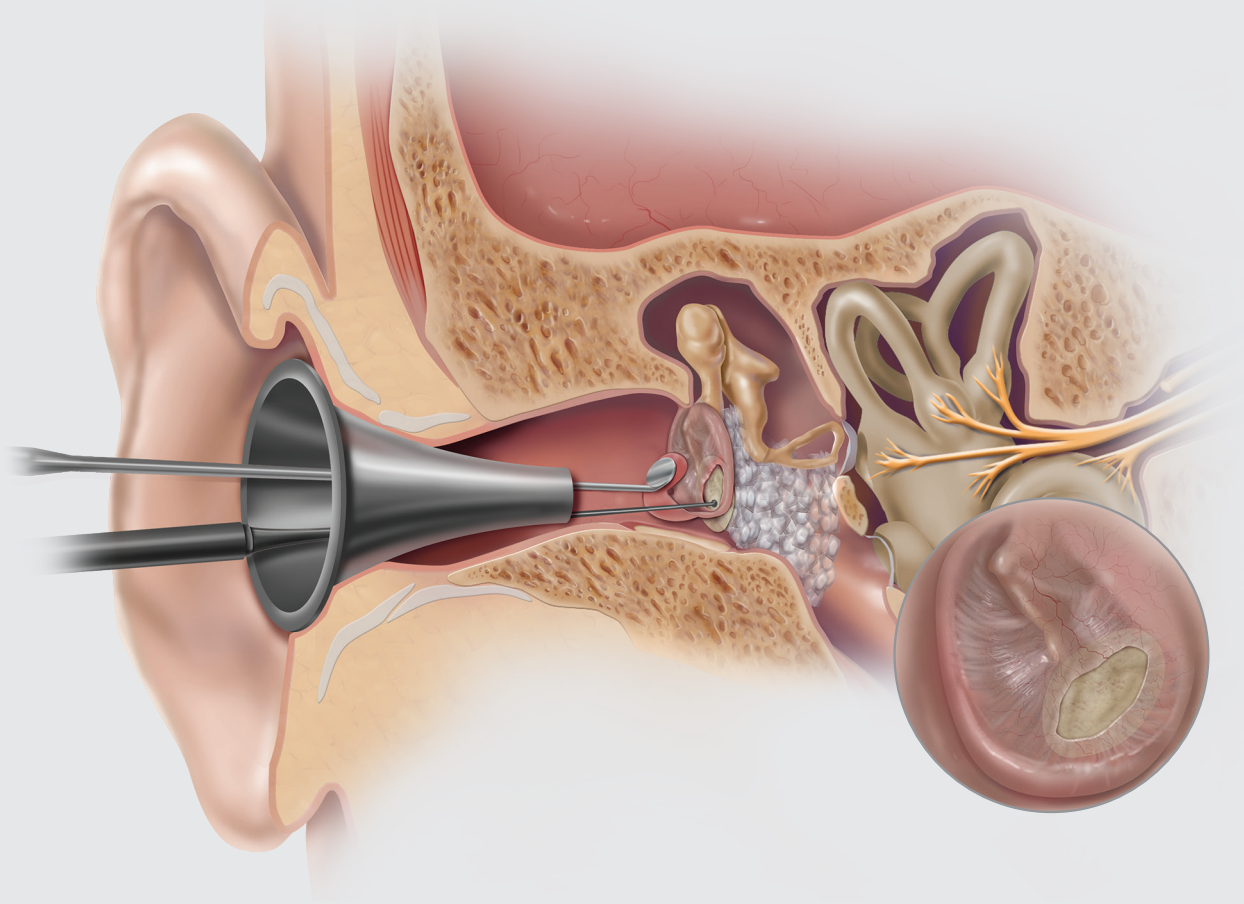


# Biodesign<sup>®</sup>

OTOLOGIC REPAIR GRAFT

---



Harvest *results,*  
not patient tissue.<sup>1</sup>

The Biodesign Otolgic Repair Graft is an implantable biomaterial that aids in the natural healing process in various otologic procedures including, but not limited to, myringoplasty and tympanoplasty.



Illustrations by Lisa Clark

# Biodesign®

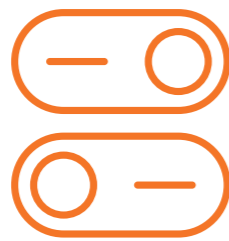
OTOLOGIC REPAIR GRAFT

The Biodesign Otologic Repair Graft enables a truly *minimally invasive* approach to ear surgery with *no donor site required* and, therefore, *no additional scar* for the patient.<sup>6</sup>



## RELIABLE CLOSURE

Biodesign material remodels into natural host tissue with an overall success rate of 91% across published literature<sup>1-9</sup> and no statistically significant difference in audiometric results when compared to temporalis fascia.<sup>1,10</sup>



## EXCELLENT HANDLING

Biodesign material is easy to manipulate, allowing for improved surgical precision during graft placement.<sup>1</sup>

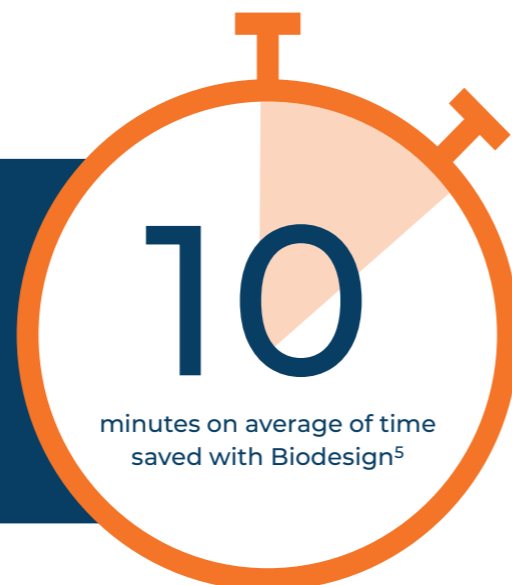


## TIME SAVING

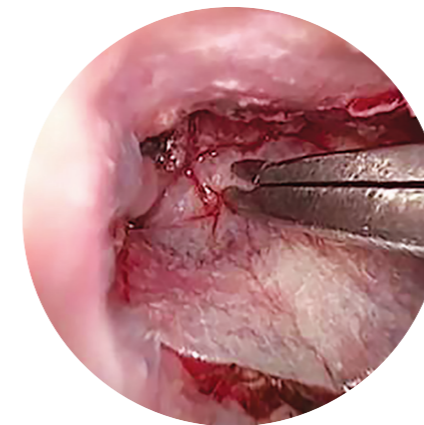
The Biodesign Otologic Repair Graft reduces the need to harvest autologous tissue, significantly decreasing intraoperative time.<sup>1</sup>

## TIME SAVINGS

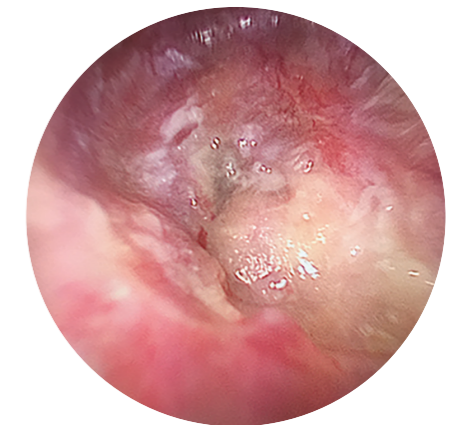
The Biodesign Otologic Repair Graft reduces the need to harvest patient tissue, resulting in an average of 10 minutes of time saved per procedure.<sup>5</sup>



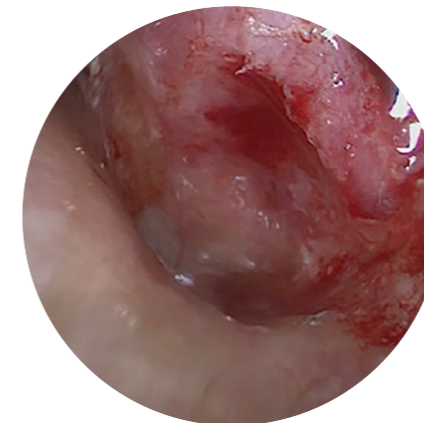
## Results After Surgery



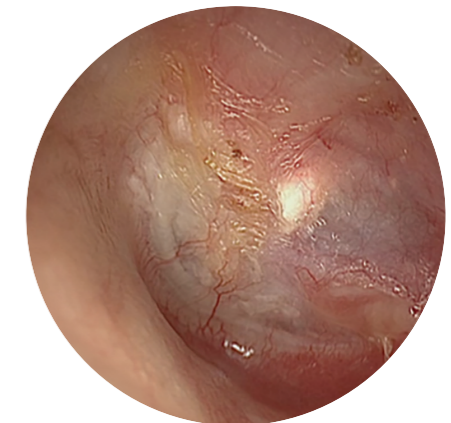
Placement of a Biodesign graft



15 days post-op



40 days post-op



60 days post-op

## Reliable Closure

The Biodesign Otologic Repair Graft closes the perforation with neovascularization and avoids additional comorbidities and scarring associated with the harvest of patient tissue.<sup>1</sup>

**91%**  
success rate  
across published  
literature.<sup>1-9</sup>

## Audiometric Results

No statistically significant difference ( $p=0.7$ ) when compared to temporalis fascia<sup>1</sup>

Audiometric tests include air-bone gap (ABG), pure tone averages (PTA), and air-to-air thresholds.

Biodesign  
graft

Temporalis  
fascia

Tips to help get the best possible results:



The graft may be cut to size when it is hydrated.



The underlay technique has been proven to be successful.<sup>1</sup>



Place the graft dry or hydrate it no longer than one minute prior to placement.

## Excellent Handling

Biodesign material is easy to manipulate, allowing for improved precision during graft placement.<sup>1</sup> The convenient sizing and packaging help simplify repairs. It comes with a case and circular size options, or square sheet sizes that can be cut to a preferred size and shape.



## Available Product Sizes

Shown at actual size.



Tips to help get the best possible results:

- Ensure adequate blood supply.
- Size the graft to allow some tissue overlap.
- Place the graft dry or hydrate it for less than one minute before placement.

Order Number	Reference Part Number	Size cm	Nominal Thickness mm
Biodesign Otologic Repair Graft			
G44840	ENT-OTO-0.4-0.6	0.4, 0.6	0.25
G44839	ENT-OTO-0.6-0.9	0.6, 0.9	0.25
G44451	ENT-OTO-2.5X2.5	2.5 x 2.5	0.25
G44452	ENT-OTO-5X5	5.0 x 5.0	0.25

Some products or part numbers may not be available in all markets. Contact your local C2Dx representative or Customer Support for details.

# References

1. D'Eredità R. Porcine small intestinal submucosa (SIS) myringoplasty in children: a randomized controlled study. *Int J Pediatr Otorhinolaryngol.* 2015;79(7):1085-1089.
2. Cass ND, Hebbe AL, Meier MR, et al. Pediatric primary tympanoplasty outcomes with autologous and non-autologous grafts. *Otol Neurotol.* 2022;43(1):94-100.
3. Chen CK, Hsieh LC. Clinical outcome of exclusive endoscopic tympanoplasty with porcine small intestine submucosa in 72 patients. *Clin Otolaryngol.* 2020;45(6):938-943.
4. Barron C, Lukens J, Niermeyer W, et al. Investigation of novel grafts in use for pediatric tympanoplasty. *Ann Otol Rhinol Laryngol.* 2019;128(12):1111-1115.
5. Redaelli De Zinis LO, Berlucchi M, Nassif N. Double-handed endoscopic myringoplasty with a holding system in children: preliminary observations. *Int J Pediatr Otorhinolaryngol.* 2017;96:127-130.
6. James AL. Endoscope or microscope-guided pediatric tympanoplasty? Comparison of grafting technique and outcome. *Laryngoscope* 2017;127(11):2659-2664.
7. Ranguis SC, Leonard CG, James AL. Prospective comparison of pediatric endoscopic lateral graft and interlay tympanoplasty. *Otol Neurotol.* 2021;42(6):867-875.
8. Wang N, Isaacson G. Collagen matrix as a replacement for Gelfilm for post-tympanostomy tube myringoplasty. *Int J Pediatr Otorhinolaryngol.* 2020;135:110136.
9. Yawn RJ, Dedmon MM, O'Connell BP, et al. Tympanic membrane perforation repair using porcine small intestinal submucosal grafting. *Otol Neurotol.* 2018;39(5):e332-e335.
10. Dontu P, Shaigany K, Eisenman DJ. Anatomic and audiometric outcomes of porcine intestinal submucosa compared to autologous fascia for tympanic membrane repair. Poster presented at: Combined Otolaryngology Spring Meetings, COSM 2022, April 27 – May 1, 2022, Dallas, TX.

## Biodesign® Otologic Repair Graft

**INTENDED USE:** The Cook® Biodesign® Otologic Repair Graft is intended for use as an implant material to aid in surgical repairs and as an adjunct to aid in the natural healing process in various otologic procedures, including but not limited to myringoplasty and tympanoplasty. The device is supplied sterile and is intended for one-time use. **Rx ONLY** This symbol means the following: **CAUTION: Federal (U.S.A.) law restricts this device to sale by or on the order of a physician. This product is intended for use by trained medical professionals.** **OTOLOGIC REPAIR GRAFT** This symbol means the following: Otologic Repair Graft

**CONTRAINDICATIONS:** This device is derived from a porcine source and should not be used for patients with known sensitivity to porcine material.

**PRECAUTIONS:** This device is designed for single use only. Attempts to reprocess, resterilize, and/or reuse may lead to device failure and/or transmission of disease. • **Do not resterilize.** Discard all open and unused portions of the device. • The device is sterile if the package is dry, unopened and undamaged. Do not use if the package seal is broken. • Discard device if mishandling has caused possible damage or contamination, or if the device is past its expiration date. • Avoid packing external canal with adherent dressings or applying excessive pressure in the ear canal. • Please take care when opening tray packaging to ensure that device remains seated in the tray.

**POTENTIAL COMPLICATIONS:** The following complications are possible with the use of surgical device materials in otologic procedures: • Abscess formation • Allergic reaction • Calcification • Cholesteatoma • Excessive redness, pain, swelling, or blistering • Fever • Infection • Inflammation (initial application of surgical device materials may be associated with transient, mild, localized inflammation) • Mastoiditis • Migration • Persistence of perforation • Recurrence • Retraction pockets • Seroma • Squamous cysts • Thickening of the tympanic membrane

See instructions for use for full product information.

AB\_FP0108-01\_REV3

To learn more, visit [c2dx.com](https://www.c2dx.com)



1. Copyright© 2024 C2Dx
2. Printed in U.S.A.
3. 555 East Eliza St, Ste. A
4. Schoolcraft, MI 49087 USA
5. t: 888 902 2239
6. [www.c2dx.com](https://www.c2dx.com)